

Agenda - 2024 RLAA Annual Meeting

May 7, 2024

- **RLAA Introductions and call to order**
- **Buckthorn Presentation**
- **Updates**
- **Initiatives**
- **Financials**
- **Open forum and adjournment**

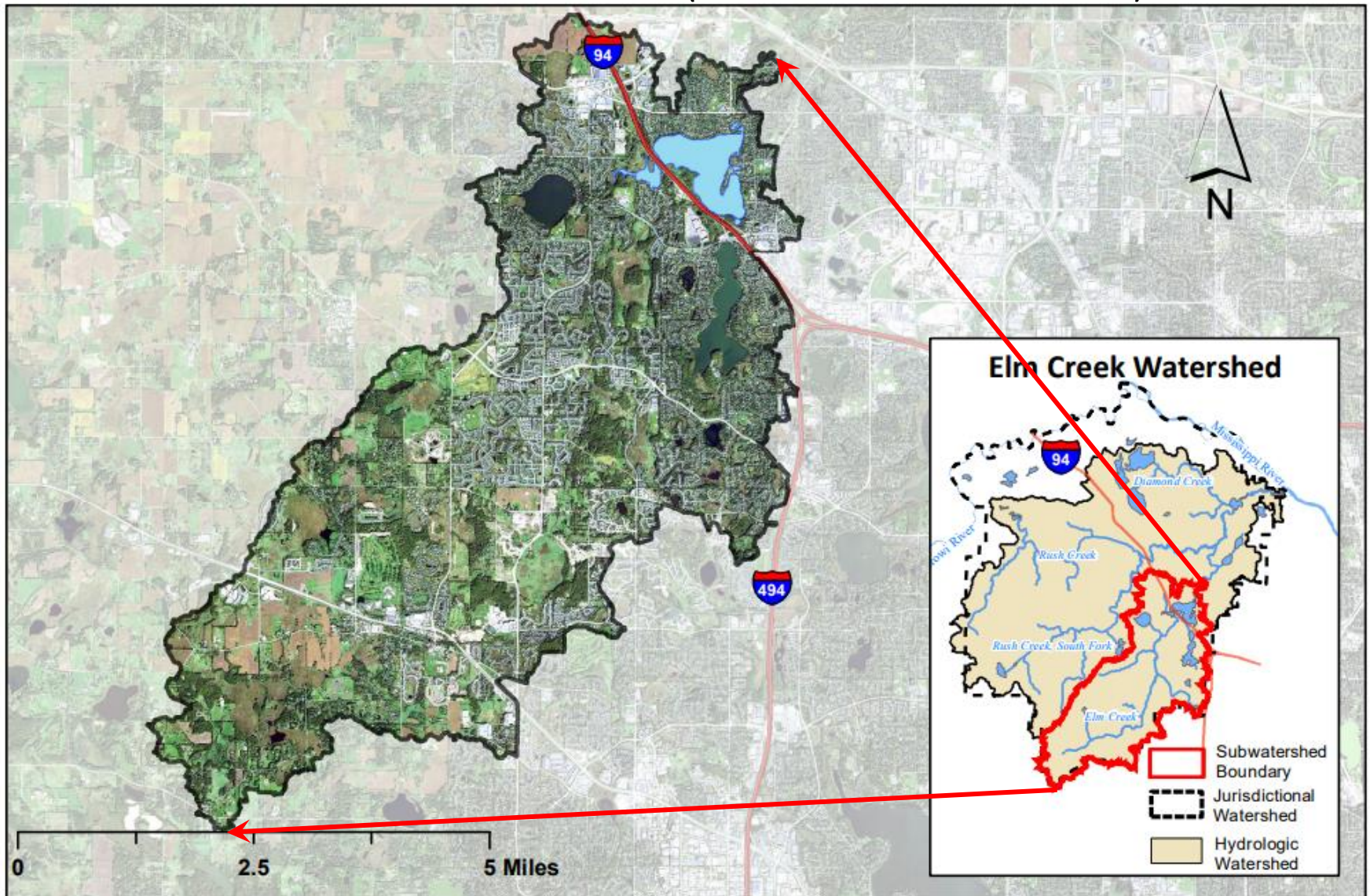
Rice Lake Area Association

email: ricelakeassoc@comcast.net

- RLAA is one of Minnesota's many volunteer, non-profit, lake associations
- Lake associations work with citizens, other lake associations, researchers, city, county, state, and federal agencies and programs
- RLAA encourages stewardship of water, soil, and vegetation for recreation and wildlife habitat
- RLAA *Volunteer* Board Members:
 - Hente Braam, President
 - Jeremy Coenen, Vice President
 - Mark Ellingson, Director
 - Zachary Frey, Director
 - Nick Mannel, Director
 - Curt Putland, Director
 - Scott Roeglin, Director
 - George Schneider, Secretary
 - Rick Stulac, Director
 - Michael Thiede, Treasurer



Elm Creek Watershed (and Rice Lake Sub-Watershed)



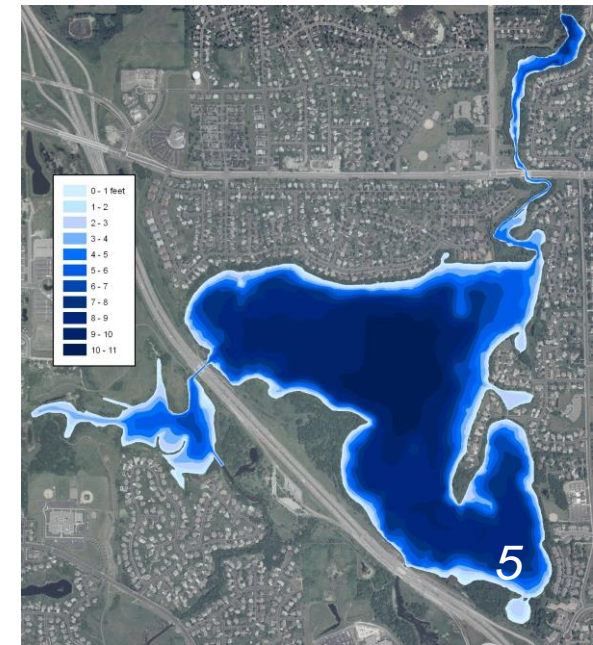
Dam and Spillway

- Elm Creek is an MPCA impaired waterway
- The spillway controls were vandalized in 2022, so the City is using sandbags to restrict spillway discharge to the minimum DNR required $1 \text{ ft}^3/\text{second}$
- The City will attempt to repair the spillway mechanism the next time a drawdown is done
- Drought and evaporation are the primary drivers of low lake levels
- Lake level is *not* very sensitive to spillway discharge:
 - With no water flowing in and $1 \text{ ft}^3/\text{second}$ draining out, the lake level would drop just 2.3 inches per month
- More questions? publicworks@maplegrovern.gov

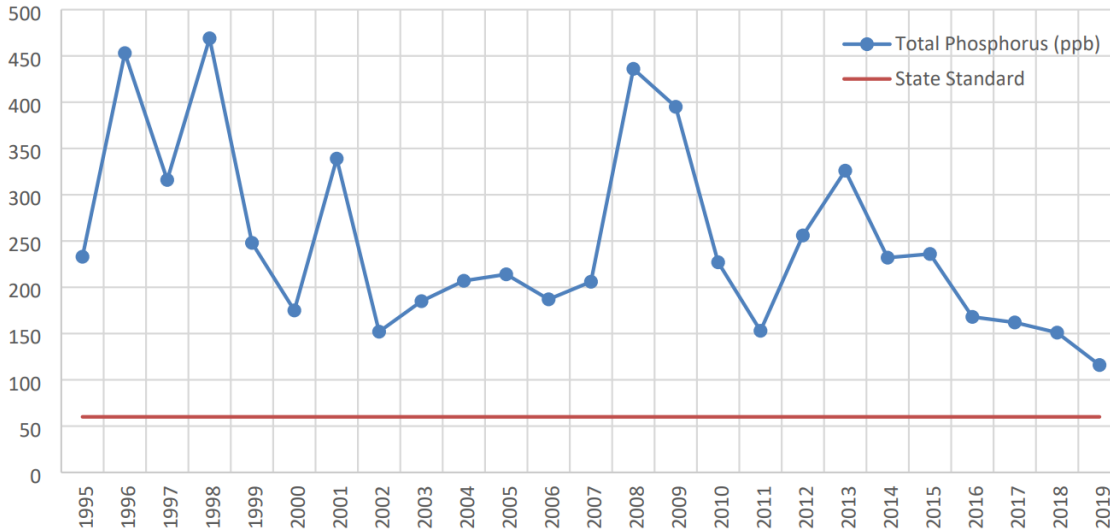


Rice Lake

- 307 acre, 7ft avg, 10ft max depth reservoir created by Elm Creek dam, 52:1 upstream watershed
- 16,092 acre Rice Lake sub-watershed within the 66,400 acre Elm Creek watershed
- Public carry-in boat launch (for kayaks, canoes, and paddleboards)
- No public access for trailered boats – only shoreline property owners
- Wildlife habitat (northern pike, bass, sunfish, perch, crappie, carp, bullhead, painted turtles, snapping turtles, frogs, toads, snakes, muskrat, squirrels, mink, beaver, fox, coyotes, racoons, deer, rabbits, bats, cormorants, hawks, eagles, loons, turkeys, ducks, geese, osprey, gulls, heron, swans, egrets, turkey vultures, pelicans, cranes, kingfishers, coots, . . .)
- Rice Lake is significantly impaired (eutrophic) with excess phosphorous and nitrogen from chemical fertilizers and decaying organic matter
 - 32.5% Maple Grove storm drains
 - 22.6% Plymouth, Medina, Corcoran storm drains
 - 2.0% County and State highway storm drains
 - 26.6% internal load (produced within the lake) and atmosphere
 - 16.3% shore and upstream drainage (not via storm drains)



Rice Lake Impairment Trends

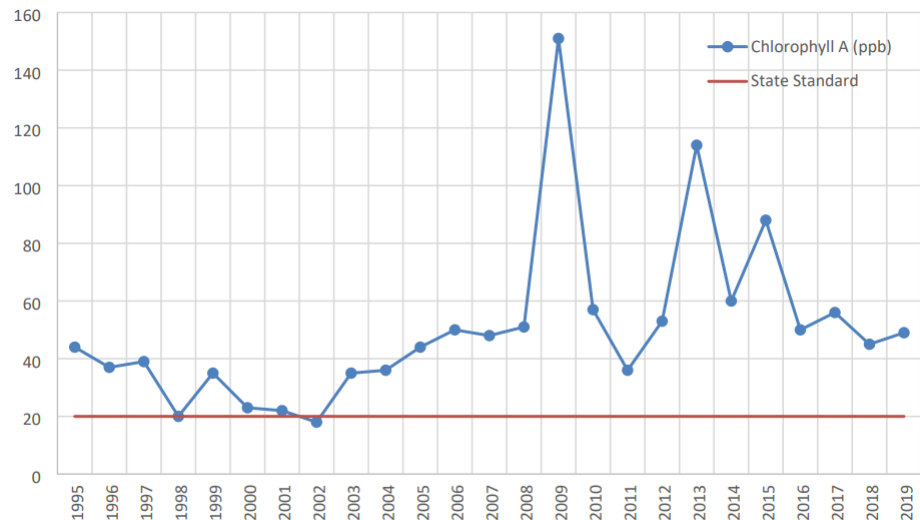


TP concentrations less than 60 ppb in shallow lakes are considered unimpaired.

Harsh Reality:

- Alum treatment cost for the whole lake would exceed \$800K
- The average annual Total Phosphorous load 2010-2012 was 12,632 lbs
- The 10 best Maple Grove storm sewer projects would cost \$1.5M and reduce TP by just 54 lbs/yr

Source: Rice Lake Subwatershed Assessment, City of Maple Grove, March 2023

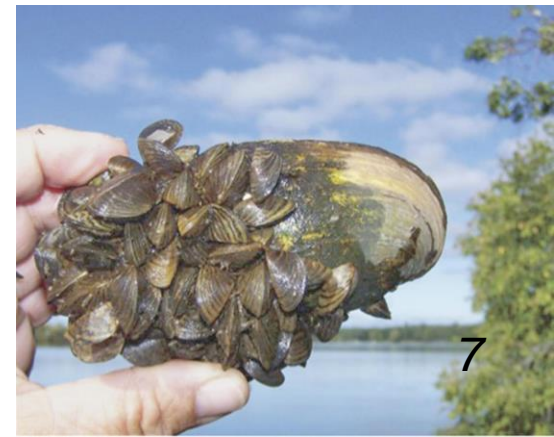


Chl A concentrations less than 20 ppb in shallow lakes are considered unimpaired

Invasive Zebra Mussels

- Zebra mussels are living in Fish Lake, so they are likely in Rice Lake too
- Rice Lake is being monitored, but there is no way to undo the Fish Lake invasion
- *Properly cleaning and drying boats, lifts, and docks from other waters remains important to prevent starry stonewort and other invasive species*
- Zebra mussels outcompete native species for microscopic food particles, resulting in clearer water and less food for native species
- Plants thrive in clearer water with more sunshine available
- Zebra mussels significantly change the ecological balance, but the long term effects in other lakes have not proven as dire as feared
- Zebra mussel shells are razor sharp, so be careful
- Zebra mussels don't eat cyanobacteria*

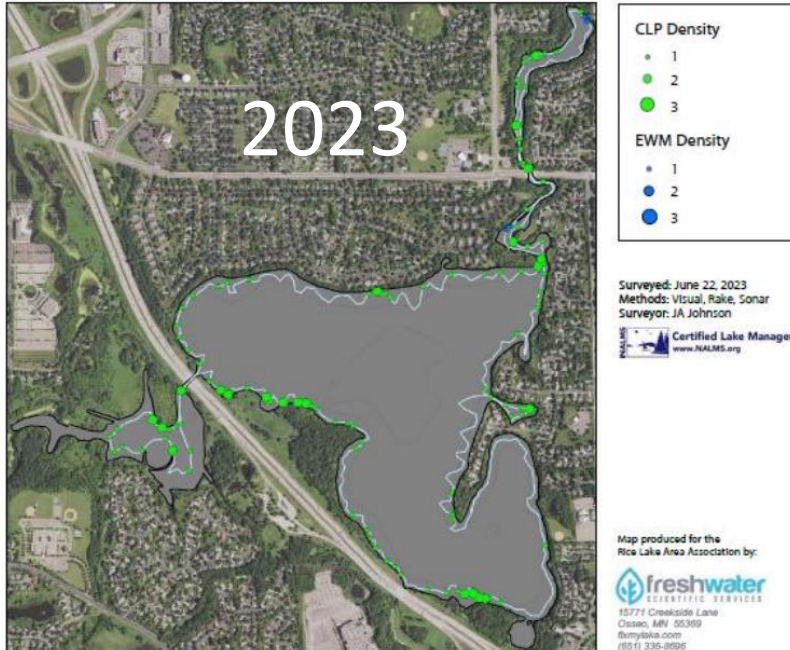
*Blue/green algae isn't algae – it is a cyanobacteria



June 2023 Plant Survey

Rice Lake (# 27-0116)

2023 Curlyleaf Pondweed & Eurasian Watermilfoil Delineation



Rice Lake (# 27-0116)

2022 Curlyleaf Pondweed & Eurasian Watermilfoil Delineation



2021 Curlyleaf Pondweed Delineation

Rice Lake (# 27-0116)



- The 2021/2022 winter drawdown *drastically* reduced invasive Curlyleaf Pondweed *and* Eurasian Watermilfoil!
- Expect continued summer algae blooms (and cyanobacteria blooms) due to fertilizer runoff



September 2023 Fish Survey

- Enormous black crappie population
- Healthy perch, pike, sunfish, sucker, and turtle populations
- Plenty of predators for bullhead and small carp; but corn-baited box nets may be needed to control destructive adult carp

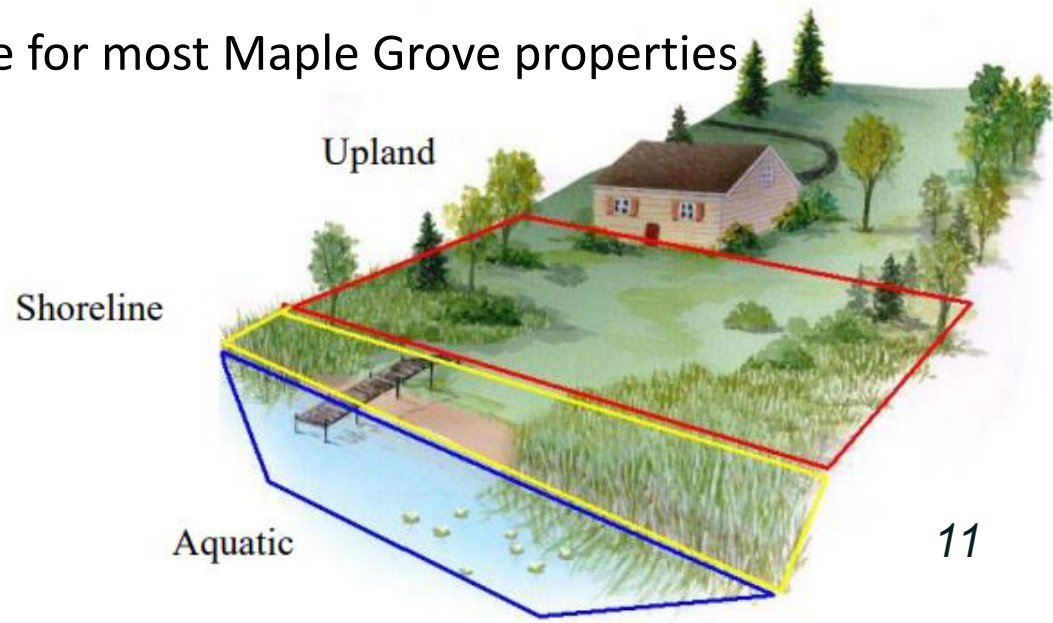


2023 Fish Survey

	1979 July 12 (5 nets) (MnDNR)	1985 July 9 (8 nets) (MnDNR)	1994 July 11 (9 nets) (MnDNR)	2008 Aug 19-21 (12 nets) (BWS)	2014 July 17-18 (12 nets) (BWS)	2022 Sept 7-8 (12 nets) (BWS)	2023 Sept 19 (6 nets) (BWS)	DNR Range	Typical Size
Bullhead - Black	99	116	1.7	177	7.6	49	79	0.7 - 26	6" & 10"
Bullhead - Brown			0.1					1.4 - 6.6	
Bullhead - Yellow	0.4	2.8	0.4	0.9	1.0	5.3	4.8	0.8 - 6.2	10" & 12"
Carp		2.1	0.3	3.8	0.3	125	12	1.0 - 3.6	16"
Crappie - Black	1.4	17	35	46	2.8	58	522	1.8 - 21	6" & 10"
Crappie - White			0.4					2.5 - 11.6	
Dogfish (Bowfin)		0.3	1.1	0.2			0.8	0.5 - 1.7	18"
Golden Shiner				1.8	16	0.1	0.2	NA	
Largemouth Bass		0.1	0.4	1.8	0.5	3.8	0.2	0.3 - 1.2	
Northern Pike	0.4	3.1	0.3	0.1	1.3	0.5	1.3	NA	30"
Sunfish - Bluegill	2.6	42	40	37	62	7.8	13	7.5 - 63	7"
Sunfish - Green		0.4	0.6		0.1			0.2 - 2.0	
Sunfish - Hybrid		9.3	1.9			0.5		NA	
Sunfish - Orangespot			0.1					NA	
Sunfish - Pumpkinseed		2.1	10	1.0	0.1	0.1	0.5	0.8 - 8.4	7"
Tadpole madtom (small bullhead)	0.2							NA	
Walleye						0.1		NA	
White Sucker		2	0.2	6.5	0.1	0.2	2.5	0.3 - 2.2	18"
Yellow Perch	3.6	21	8.9	4.2	0.7	8.1	9.5	0.5 - 3.4	5"
Bullhead - Black YOY				16	654	94		NA	
Carp YOY					405	4.2		NA	
Crappie - Black YOY					1.3	206	1.7	NA	
Largemouth bass YOY						0.6		NA	
Sunfish - Bluegill YOY					2.7		1.0	NA	
Yellow perch YOY						0.4		NA	

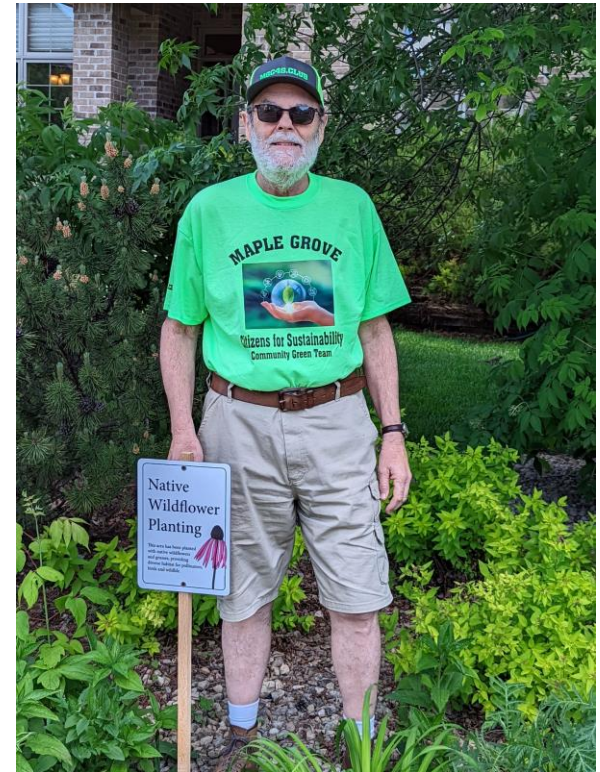
Lake Stewards Program

- Available to RLAA members via the statewide Minnesota Lakes and Rivers Advocacy mnlakesandrivers.org
- “Shoreland Guide to Lake Stewardship” booklet available from Amazon (\$10)
- Provides educational resources and statewide representation
- Storm sewers are expressways from yards and pavement to lakes
- The curb is essentially lakeshore for most Maple Grove properties



Maple Grove Citizens for Sustainability

- mgc4s.club
- Potential RLAA environmental partner
- Community green team
- U of M student project sponsor
- Community gardens
- Rain gardens
- Lawn reduction and aeration
- Storm drain medallions
- Keeping fertilizer and yard waste out of storm drains



RLAA Initiatives

- Evaluate the costs and cost-shares of removing destructive carp using corn-baited box nets – partner with Fish Lake Area Residents Association
- Deploy no-wake buoys to reduce erosion and encourage boating safety
- Coordinate fish, vegetation, and water quality surveys and remediations
- Coordinate drawdowns (when recommended) to disrupt invasive vegetation
- Maintain and operate winter aerator to reduce fish kill
- Coordinate grants and cost shares
- Coordinate shared private boat ramp access
- Coordinate with other groups to implement best practices for a healthy lake



Some Boating Reminders

- Be considerate (speed, noise, wildlife, etc.)
- Open water speed limit: 40mph day, 15mph night
- No wake speed limit: 5mph
 - All channels and within 100ft of shore, anchored or non-motorized watercraft, or swimmers
- Life jackets available for everyone. Kids <10 must wear them.
- Personal (motorized) Watercraft (Jet Ski, Sea Doo, Wave Runner, . . .)
 - 9:30 am until one hour before sunset
 - Life jackets must be worn
 - 5 mph no wake speed in channels and within *150 ft* of shore, anchored watercraft, non-motorized watercraft, or swimmers
 - Wake jumping, weaving through traffic, chasing wildlife, and destroying vegetation are prohibited
 - 14-17 year olds must have an operators permit or someone at least 21 on board
 - 13 year olds must have an operators permit and be continually watched by someone at least 21 or have someone at least 21 on board
 - Children under 13 are prohibited from operating personal watercraft



Shared private boat ramp access

- A very generous RLAA member continues to grant RLAA shoreline residents gated access to their private boat ramp at 14212 87th Ave N
- RLAA boaters are issued boat stickers and unique gate access codes each year (please lock the cable again when you finish)



RLAA Engagement & Social Media

- We have a Facebook page (<https://www.facebook.com/groups/225848165486736>); please become a member!
- RLAA advocates our members become involved in the Adopt-A-Drain program (<https://mn.adopt-a-drain.org/>)
- RLAA is working with Carp Solutions (<https://www.carpsolutionsmn.com/>) about using Box Nets to harvest common carp.
 - YouTube video of this process in action: <https://youtu.be/dyxFjh4LW0o>

Income Statement

1/1/2023 to 1/1/2024			
Revenue			
Membership Dues & Interest Income		\$ 6,905.85	
Total Income			\$6,905.85
Expenses			
Buoys		\$ 2,243.88	
Fish Survey		\$ 1,125.00	
Plant Survey		\$ 1,250.00	
Fish Stocking		\$ 3,293.50	
MN Lakes & Rivers membership		\$ 150.00	
Aerator Expenses		\$ 627.27	
D&O Insurance		\$ -	
Administration expenses		\$ 442.05	
Total Expenses			\$9,131.70
Total Income/Loss			-\$2,225.85
***Note: calculated on a cash basis			

Balance Sheet

RLAA Bank Accounts	1/1/2023	1/1/2024
Checking	\$ 16,247.60	\$ 14,017.31
Savings	\$ 3,058.66	\$ 3,063.10
Total current assets	\$ 19,306.26	\$ 17,080.41
Anticipated Expenses in 2024		
Fish Survey		\$1,140
Plant Survey		\$396
D&O Insurance (2 years as '23 was paid in '24)		\$1,396
Xcel Energy		\$500
Buoy Insurance		\$181
Total		\$3,613
Anticipated Reimbursements in 2024		
Fish stocking		\$2,510
2023 Plant Survey		\$375
Buoys		\$991
Total		\$3,876
***Note: calculated on a cash basis		

Treasurer's Report

❖ **Thus far this year**

- ❖ *We've collected dues from 29 members for the 2024 boating season (as of April 2nd)*
- ❖ *This is down from 54 members by this time last year!*

❖ **Contact Database**

- ❖ *Our database has about 250 street addresses of potential member, almost all of them with email addresses*

❖ **Expenses Explained**

- ❖ *Aeration (\$146 newspaper notification, \$481 electricity)*
- ❖ *Fish Survey (\$3750 total, City of MG reimbursed \$2625)*
- ❖ *New Buoys (\$1718 for buoys, \$275 for ancillary supplies, \$250 insurance)*

❖ **2024 Goals**

- ❖ *Our goals include increasing our membership in 2024*

Open Forum

- Ideas?
- Concerns?
- Comments?
- Want to get more actively involved?

ricelakeassoc@comcast.net